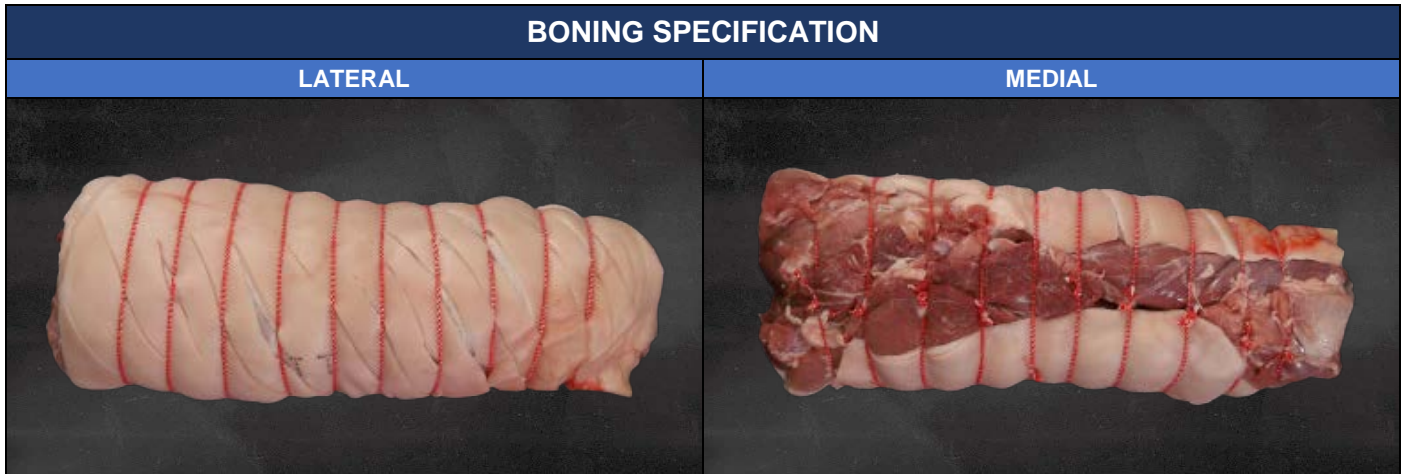


Code	371100J0
Description	MI Leg



CARCASE	SPECIFICATION POINTS	<ul style="list-style-type: none"> Grade: 2, 3, 4, 5, 6 P2 fat depth: > 0 mm Carcase weight: Any weight
	DEFECTS	<ul style="list-style-type: none"> Carcase hair Blood clot/bruise Foreign material (grease, rail dust, plastic, metal etc.) Zero tolerance defects (faeces, abscesses, ingesta etc.)

CUTTING FURTHER PROCESSING	PROCESS STEPS	<ul style="list-style-type: none"> Cut square between 5th-6th lumbar vertebrae Remove hind trotter and hind hock Remove skirt meat and popes eye Remove tail bone, aitch bone and femur bone Remove topside Remove partial knuckle Score rind evenly at 45° and 20 mm intervals Roll pieces ensuring uniform thickness String piece at 20 mm intervals
	SPECIFICATION POINTS	<ul style="list-style-type: none"> Fat depth: < 13 mm Rind scored: 45° at 20 mm intervals Piece weight: < 7.0 kg Piece strung: single strung at 20 mm intervals Moisture infusion rate: 10-12%
	DEFECTS	<ul style="list-style-type: none"> Rind damaged Excess fat Bone chips and cartilage Foreign material (grease, rail dust, plastic, metal etc.)



Document Name	Document Code	Version Number	Written/Revised By	Reviewed By	Authorised By
Product Specification 371100J0	WP.QA.SPEC.101	1.0	Stephanie Po-Myat Thomas Ng	Scott Noon Matt Troy	Tom Stewart

Code	371100J0
Description	MI Leg



BAGGING	SPECIFICATION POINTS	<ul style="list-style-type: none"> • Bagging format: 1 soaker pad/piece and 1 piece/bag
	DEFECTS	<ul style="list-style-type: none"> • Incorrect or damaged packaging or label • Piece and soaker pad not aligned in bag • Leaking vacuum • Poor or loose shrink (pack not tight)

PACKING	SPECIFICATION POINTS	<ul style="list-style-type: none"> • Packing format: 3 packs/carton • Digi-label PLU: 711
	DEFECTS	<ul style="list-style-type: none"> • Incorrect or damaged packaging or label • Label not aligned on carton • Mixed product

ADDITIONAL REQUIREMENTS		
BILL OF MATERIALS	LABELLING	MICROBIOLOGICAL
6001491 CARTON STACK FLOW BASE 130MM NEW (QTY:1) 6001055 LID BEC STACK FLOW (QTY:1) 6002926 BAG BEC PORK MI 350x600 A600 50UM (QTY:3) 6003220 SOAKER PAD 128x141mm BLACK (QTY:3) 6000163 TWINE RED & WHITE 6000923 LABEL BLANK 60X43MM (QTY:3) 6001353 LABEL WP CARTON 70X148 (EXT ADHESIVE) (QTY:1)	EAN: N/A TUN: N/A Claims: N/A Allergens: N/A Country of Origin: N/A Label Format: 28 (NSW) Price: N/A Max. Shelf Life: 28 days Min. Life on Receipt: N/A	Standard Plate Count: < 100,000 cfu/g E. coli: < 100 cfu/g Coliforms: < 1,000 cfu/g Salmonella: < 0 cfu/25 g Enterobacteriaceae: N/A Yeast: N/A Mould: N/A Bacillus Cereus: N/A

Document Name	Document Code	Version Number	Written/Revised By	Reviewed By	Authorised By
Product Specification 371100J0	WP.QA.SPEC.101	1.0	Stephanie Po-Myat Thomas Ng	Scott Noon Matt Troy	Tom Stewart